

## CA Screwdrivers



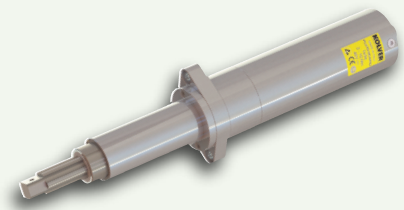
The CA screwdrivers are designed for automated and fixtured applications. Special wiring and dedicated controllers are equipped with electric signals and contacts for immediate and easy interface. The ideal alternative to pneumatic drivers, they feature a long life maintenance free electric motor with a unique electronic torque control system for high accuracy throughout a wide torque range (up to 50 Nm); an aluminium body, for easy and quick clamp, supplied with 2,5 m cable.

The PLUTO..CA/FN2 Series incorporates the PLUTO DC-controlled electric screwdriver design, supplied in an inline aluminium housing for flange mounting applications. The DC motor and solid state controls of the PLUTO are ideal for automated high volume/high duty applications.

Flange and telescopic spindle available together or separately.



TELESCOPIC SPINDLE



PLUTO..CA/FN2

\*All CA are also available with torque and angle excluding the KBL series. Additional information available at [www.kolver.it](http://www.kolver.it)

Model	Code	Torque Nm	RPM max	L x Ø mm	Output	Control unit
NATO15CA	163015	1–15 Ncm	700	130x20	Half moon 4mm	EDU2AE/TOP/NT
MITO15CA	170016	0,2–1,5	850	226x36	Hex. 1/4"	EDU2AE Series
MITO15CA/FN	170016/FN	0,2–1,5	850	271,4x32,8	Hex. 1/4"	EDU2AE Series
PLUTO3CA	130303	0,3–3,0	1200	164x40	Hex. 1/4"	EDU2AE Series
PLUTO3CA/FN2	130303/FN2	0,3–3,0	1200	268,25x39,8	Sq. 3/8"	EDU2AE Series
PLUTO6CA	133206	0,5–6,0	920	164x40	Hex. 1/4"	EDU2AE Series
PLUTO6CA/FN2	133206/FN2	0,5–6,0	920	268,25x39,8	Sq. 3/8"	EDU2AE Series
PLUTO10CA/N	133211/N	1,5–10,0	600	164x40	Hex. 1/4"	EDU2AE Series
PLUTO10CA/FN2	133211/FN2	1,5–10,0	600	268,25x39,8	Sq. 3/8"	EDU2AE Series
PLUTO15CA/N	133216/N	2,0–15,0	320	164x40	Hex. 1/4"	EDU2AE Series
PLUTO15CA/FN2	133216/FN2	2,0–15,0	320	268,25x39,8	Sq. 3/8"	EDU2AE Series
PLUTO20CA	133221	2,0–20,0	210	232,10x47	Sq. 3/8"	EDU2AE Series
PLUTO20CA/FN	133221/FN	2,0–20,0	210	323,35x47	Sq. 3/8"	EDU2AE Series
PLUTO35CA	133236	2,0–35,0	140	246,60x57	Sq. 3/8"	EDU2AE Series
PLUTO35CA/FN	133236/FN	2,0–35,0	140	337,85x57	Sq. 3/8"	EDU2AE Series
PLUTO50CA	133250	5,0–50,0	90	246,60x57	Sq. 1/2"	EDU2AE Series
PLUTO50CA/FN	133250/FN	5,0–50,0	90	351x57	Sq. 1/2"	EDU2AE Series
KBL04FR/CA	190004/CA	0,04–0,4	1000	245,60x39,8	Hex. 1/4"	EDU1BL/SG
KBL04FR/CA/FN	190004/CA/FN	0,04–0,4	1000	330x39,80	Hex. 1/4"	EDU1BL/SG
KBL15FR/CA	190015/CA	0,4–1,5	1000	245,60x39,8	Hex. 1/4"	EDU1BL/SG
KBL15FR/CA/FN	190015/CA/FN	0,4–1,5	1000	330x39,80	Hex. 1/4"	EDU1BL/SG
KBL30FR/CA	190030/CA	0,7–3,0	1000	252,80x39,8	Hex. 1/4"	EDU1BL/SG
KBL30FR/CA/FN	190030/CA/FN	0,7–3,0	1000	338x40	Hex. 1/4"	EDU1BL/SG
KBL40CA	190040/CA	0,9–4,0	750	252,80x39,8	Hex. 1/4"	EDU1BL/SG
KBL40CA/FN	190040/CA/FN	0,9–4,0	750	338x40	Hex. 1/4"	EDU1BL/SG